

**BIOFA**   
WOHNGESUND & NACHHALTIG



# Wood Varnish Aqua solvent-free

for indoor and outdoor use

- Crystal Clear Ingredient Declaration ([www.biofa.de](http://www.biofa.de))
- Made from natural raw materials
- Renewable and mineral ingredients
- Free from cobalt and nanoparticles
- Highly elastic and water-dilutable
- Water and dirt repellent
- Meets EN 71,3 and 9 (safety of children's toys) and DIN 53160 (fastness to perspiration and saliva)





Image source: : Steffen Schuster www.zurform.de

# Natural

## Wood Varnishes

The water-based BIOFA Wood Varnish Aqua was developed for the treatment of wood indoors and outdoors. It is low-emission and consists of 95% renewable and mineral raw materials, which offer important advantages such as high elasticity and weather resistance. The Wood Varnish Aqua is available in various colour shades, whose durable colour pigments guarantee high UV resistance. The high oil content ensures a dirt and water-repellent surface and adapts flexibly to the needs of the wood. The transparency of this natural coating gives the surface a lively appearance and the natural structure of the wood remains visible.

BIOFA Wood Varnish Aqua,  
5201 colorless  
and 52011 colored



- Crystal Clear Ingredient Declaration ([www.biofa.de](http://www.biofa.de))
- Low-emission
- Made from natural raw materials
- 95% renewable and mineral ingredients
- colored 52011, colorless 5201 (white and colorless are only suitable for indoor use)
- Free from cobalt and nanoparticles
- Fast drying
- Highly elastic and water-dilutable
- Transparent and semi-glossy
- Breathable and antistatic
- Water and dirt repellent
- Meets EN 71,3 and 9 (safety of children's toys) as well as DIN 53160 (fastness to perspiration and saliva)

### Applications:

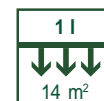
BIOFA wood varnishes are suitable for all absorbent and untreated wooden components indoors and outdoors, windows, doors, wood panelling, beams, shelves, furniture and toys.



Working Temperature  
↑ 12°C



20°C 50%  
Reworking after  
ca. 16 h



1 l  
14 m²  
20°C 50%  
Drying Time  
24 h



Storage  
65%  
5°C < 25°C



# Wood Varnish Aqua



Bildquelle: Steffen Schuster [www.zurform.de](http://www.zurform.de)



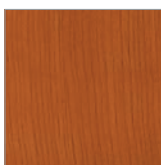
## Color selection from the BIOFA FILUC Chart on spruce wood



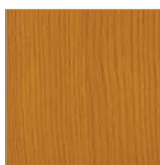
F-BR 9025 redwood



F-BT 9048 turquoise



F-BR 9030 mahogany



F-BR 9022 teak



F-BR 9027 hazelnut



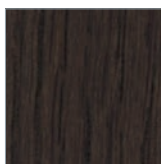
F-BR 9024 rosewood



F-BR 9023 pine



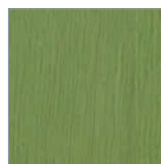
F-GO 9033 corn yellow



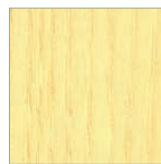
F-SW 9004 ebony



F-BT 9046 gentian blue



F-GR 9053 moss green



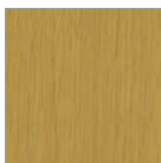
F-GO 9034 lemon yellow



F-SW 9002 grey



F-SW 9003 white



F-BR 9029 light oak



F-BR 9028 dark oak



F-RR 9037 red



F-RR 9042 burgundy

Your local retailer:

The color shades presented in this brochure are indicative and may vary depending on the type of background. Different monitor settings in terms of brightness and contrast may result in color differences. Liabilities regarding the color shades can therefore not be derived.

**BIOFA Naturprodukte W. Hahn GmbH**  
Dobelstr. 22 • D-73087 Bad Boll  
T: +49 7164 / 9405 0 • F: +49 7164 / 9405 96  
[info@biofa.de](mailto:info@biofa.de) • [www.biofa-de.com](http://www.biofa-de.com)

